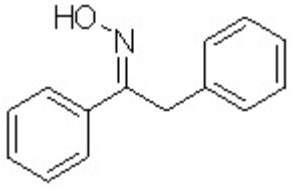


7.619  
7.609  
7.600  
7.358  
7.351  
7.342  
7.271  
7.260  
7.255

4.236



2.30

3.33

4.93

2.00

9.0 8.5 8.0 7.5 7.0 6.5 6.0 5.5 5.0 4.5 4.0 3.5 3.0 2.5 2.0 1.5 1.0 0.5 0.0

f1 (ppm)